

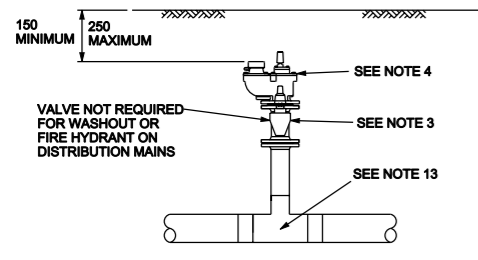
DO NOT SCALE - IF IN DOUBT ASK

NOTES

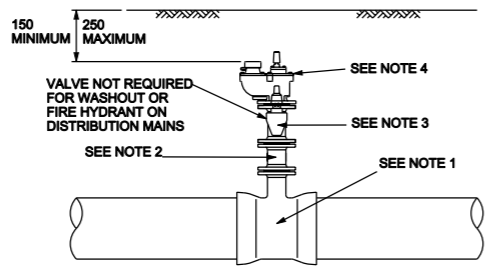
- DN80 FLANGE ON SOCKET TEE
- DN80 DOUBLE FLANGED RISER PIECE(S) IN STANDARD LENGTHS
- DN80 BEVEL GEARED GATE VALVE - VALVE NOT REQUIRED WITH FIRE HYDRANT ON DISTRIBUTION MAINS.
- DN80 SCREW DOWN TYPE HYDRANT
- DN150 FLANGE ON SOCKET TEE
- DN150/80 DOUBLE FLANGED CONCENTRIC TAPER
- DN300 FLANGE ON SOCKET TEE
- DN300 DOUBLE FLANGED RISER PIECE(S) IN STANDARD LENGTHS
- 4550D STUDDED PLATE DRILLED TO DN300 PN16 FLANGE AND STUDDED TO SUIT DN80 PN16 FLANGE WITH CENTRE HOLE DN80
- FOR DETAILS OF CHAMBERS REF DRG AM-DRG-WN-02211
- IF RISER FOR WASHOUT IS GREATER THAN 1.5m LONG, ISOLATING BEVEL GEARED GATE VALVE TO BE INSTALLED ON TEE FLANGE FOR ALL SIZES OF MAIN. NOT TO BE FITTED WITH FIRE HYDRANT. VALVE SHALL BE OPERATED BY EXTENSION SPINDLE AND GUIDE TUBE AND TO BE ORIENTATED SUCH THAT SPINDLE IS ACCESSIBLE AND DOES NOT INTERFERE WITH OPERATION OF WASHOUT
- IF LEAKATOR ACCESS REQUIRED INSTALL DN200 BEVEL GEARED GATE VALVE AT TEE FLANGE LEVEL.
- PE BUTT WELDED IN LINE TEE KIT
- THE HYDRANT SHALL BE INSTALLED SO THAT IT IS TRULY PLUMB
- THROUGH BORE HYDRANTS SHALL BE USED WHEN INSTALLED DIRECTLY ABOVE THE MAIN.

GUIDANCE NOTE

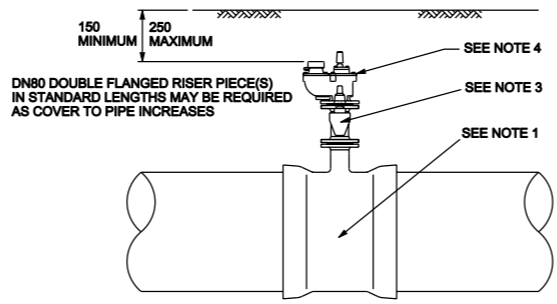
- THIS DRAWING DETAILS BEST PRACTICE AND SHALL BE ADHERED TO WHERE EVER PRACTICABLE. DEROGATION OF THE CONTENT ON INTENT OF THIS DRAWING REQUIRES WRITTEN CONSENT FROM THE TECHNICAL LEAD.
- FOR GUIDANCE ON PIPE MATERIAL SELECTION SEE TW WATER MAINS DESIGN STANDARD
- IN FIELD, RAISED CHAMBER AND/OR FENCING MAY BE APPROPRIATE - LAND OWNER AGREEMENT REQUIRED.
- CHAMBER STRUCTURAL DETAILS SHALL BE CHECKED FOR EACH APPLICATION.
- CHAMBER SHALL BE INSTALLED IN ACCORDANCE WITH MANUFACTURER'S INSTRUCTIONS.
- WHERE APPLICABLE ALL MATERIALS SHALL BE FROM THAMES WATER FRAMEWORK SUPPLIERS
- EXTERNAL PROTECTION FOR BURIED FLANGED JOINTS, FLANGE ADAPTORS AND COUPLINGS SHALL BE TYPE P1 AS DEFINED IN CLAUSE 5.14 OF CESWI 6TH EDITION. THIS PROTECTION SHALL COVER THE FLANGE AND ALL NUTS, BOLTS AND THREADS.



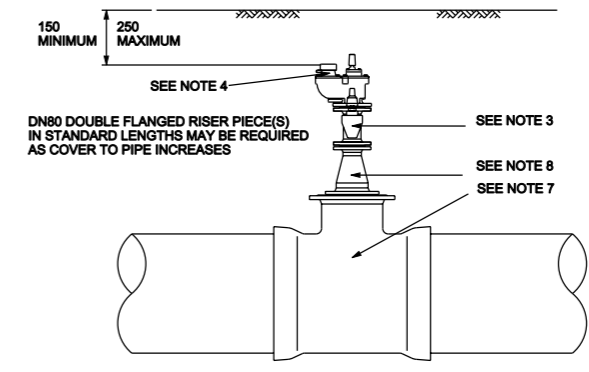
INLINE - WASHOUT DISINFECTION POINT FIRE HYDRANT PE ≤ OD355
CHAMBER DETAILS OMITTED FOR CLARITY SEE NOTE 10



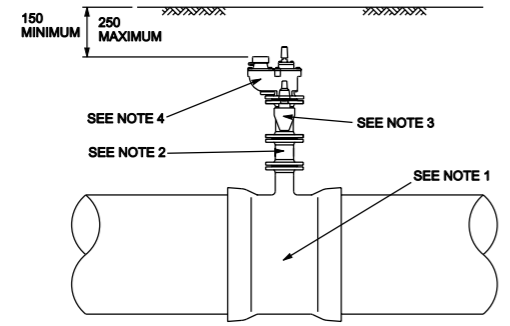
INLINE - WASHOUT DISINFECTION POINT FIRE HYDRANT ≤ DN300
CHAMBER DETAILS OMITTED FOR CLARITY SEE NOTE 10



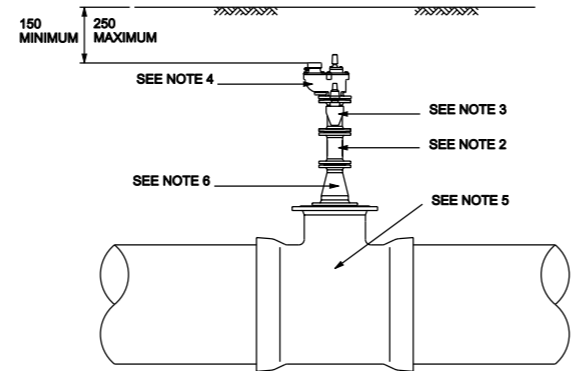
INLINE - DISINFECTION POINT > DN300 ≤ DN600
CHAMBER DETAILS OMITTED FOR CLARITY SEE NOTE 10



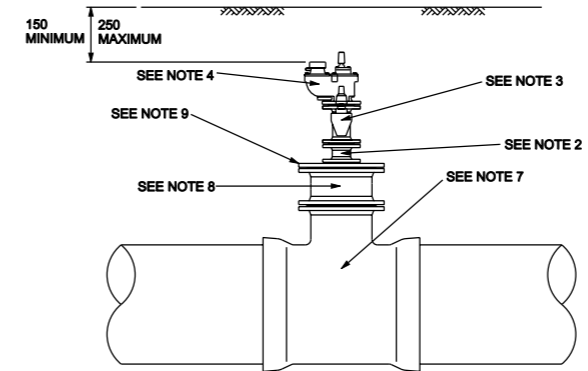
INLINE - DISINFECTION POINT > DN600
CHAMBER DETAILS OMITTED FOR CLARITY SEE NOTE 10



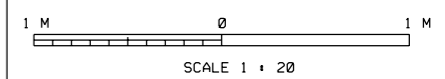
INLINE - FIRE HYDRANT > DN300 ≤ DN600
CHAMBER DETAILS OMITTED FOR CLARITY SEE NOTE 10



INLINE - FIRE HYDRANT > DN600
CHAMBER DETAILS OMITTED FOR CLARITY SEE NOTE 10



INLINE - WASHOUT AT LOW POINT > DN300
CHAMBER DETAILS OMITTED FOR CLARITY SEE NOTE 10



NOTE: CHAMBER DETAILS OMITTED FOR CLARITY SEE DRG No.AM-DRG-WN-02211

DATA OWNER	ASSET MANAGEMENT STANDARDS MANAGER
TECHNICAL LEAD (S)	MICHAEL BRIGHT
DOCUMENT AUTHOR	TECHNICAL INFORMATION
AUTHORISED BY	STANDARDS BOARD
DOCUMENT LOCATION	AM STANDARDS
DATE OF ISSUE	24/07/2013
REASON FOR ISSUE	CONVERSION AND REISSUE
REVIEW DATE	31/07/2015

Thames Water
Thames Water Utilities
ASSET MANAGEMENT
 CLEAR WATER COURT
 VASTERN ROAD, READING RG1 8DB

Location Code:	OS Reference:	Security Reference:	Drawn By:
Project Group:	Sub Process:		
TECHNICAL STANDARDS			
Location / Towns:			
Site Name:			
Project Name:			
STANDARD DRAWINGS - MANDATORY			
Contract Name:			
WATER NETWORK			
Drawing Title:			
INLINE PIPEWORK DETAILS FOR WASHOUT, DISINFECTION POINT AND HYDRANTS			
Drawing No.:	Scale:	Sheet Size:	Rev:
AM-DRG-WN-02212	1:20	A1	1.0