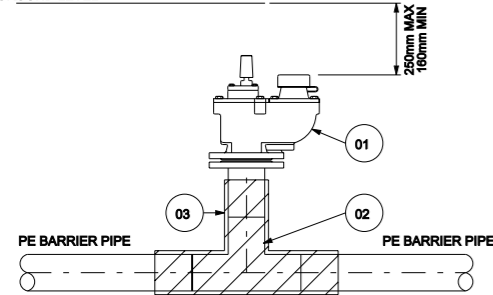


1 VALVE TEE CONNECTION PE BARRIER PIPE SYSTEM

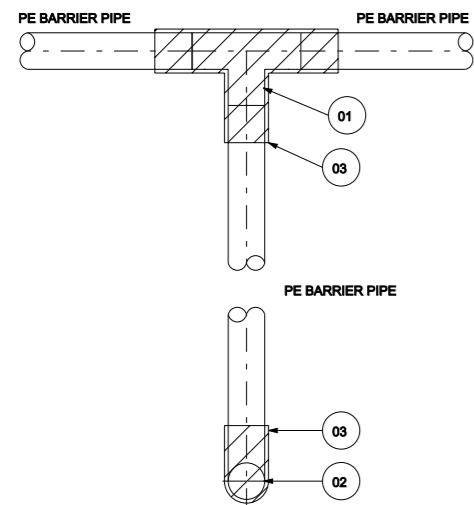
SCHEDULE OF PIPES AND FITTINGS		
MK	DESCRIPTION	NO OF
01	PE BUTT WELDED TEE WITH FLANGED BRANCH	1
02	SLUICE VALVE	1
03	PE STUB FLANGE	1
04	WRAPPING ALUMINIUM BARRIER TAPE AND PROPRIETARY WATERPROOF PETROLATUM TAPE (DENSO)	1

GROUND LEVEL



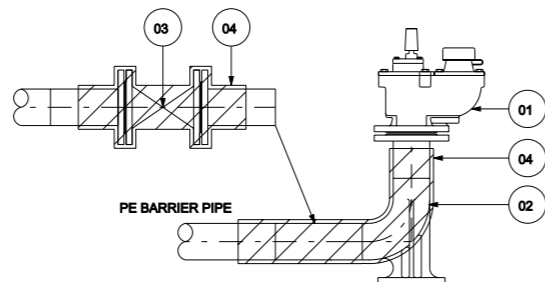
INLINE HYDRANT OR WASHOUT PE BARRIER PIPE SYSTEM

SCHEDULE OF PIPES AND FITTINGS		
MK	DESCRIPTION	NO OF
01	HYDRANT	1
02	PE BUTT WELDED IN LINE TEE KIT RISER CUT TO SUIT	1
03	WRAPPING ALUMINIUM BARRIER TAPE AND PROPRIETARY WATERPROOF PETROLATUM TAPE (DENSO)	1



HYDRANT ON LEG PE BARRIER PIPE SYSTEM

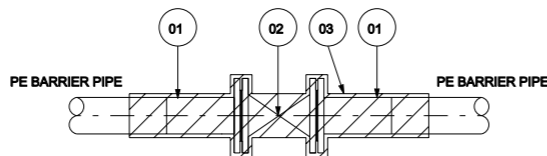
SCHEDULE OF PIPES AND FITTINGS		
MK	DESCRIPTION	NO OF
01	PE BUTT WELDED TEE	1
02	REFER TO END HYDRANT DETAILS	1
03	WRAPPING ALUMINIUM BARRIER TAPE AND PROPRIETARY WATERPROOF PETROLATUM TAPE (DENSO)	1



END HYDRANT OR WASHOUT PE BARRIER PIPE SYSTEM

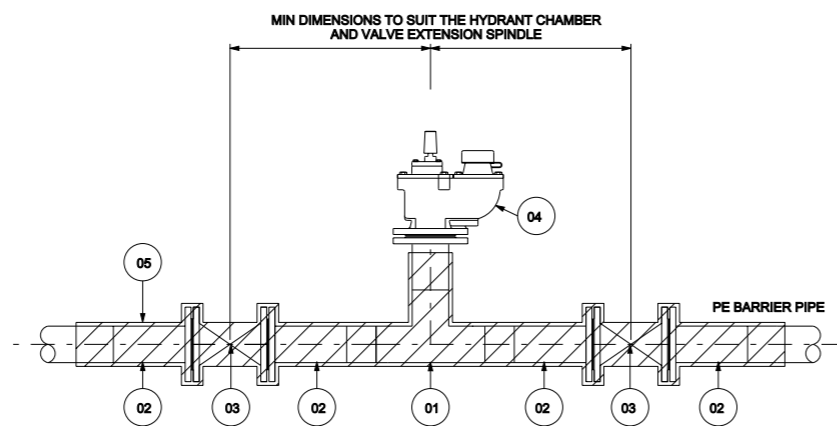
SCHEDULE OF PIPES AND FITTINGS		
MK	DESCRIPTION	NO OF
01	HYDRANT	1
02	PE BUTT WELDED DUCKFOOT BEND KIT - RISER CUT TO SUIT	1
03	OPTIONAL VALVE - CONSULT NETWORKS	1
04	WRAPPING ALUMINIUM BARRIER TAPE AND PROPRIETARY WATERPROOF PETROLATUM TAPE (DENSO)	1

NOTE: REDUCING SPIGOT MAY BE REQUIRED



INLINE SLUICE VALVE PE BARRIER PIPE SYSTEM

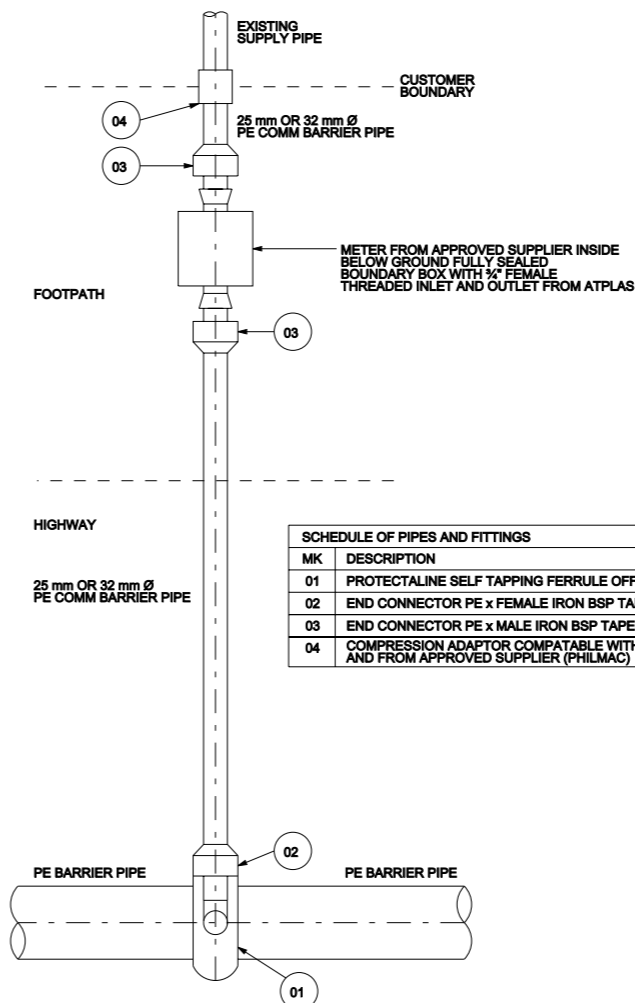
SCHEDULE OF PIPES AND FITTINGS		
MK	DESCRIPTION	NO OF
01	PE STUB FLANGE	2
02	SLUICE VALVE	1
03	WRAPPING ALUMINIUM BARRIER TAPE AND PROPRIETARY WATERPROOF PETROLATUM TAPE (DENSO)	1



INLINE XOX INSTALLATION PE BARRIER PIPE SYSTEM

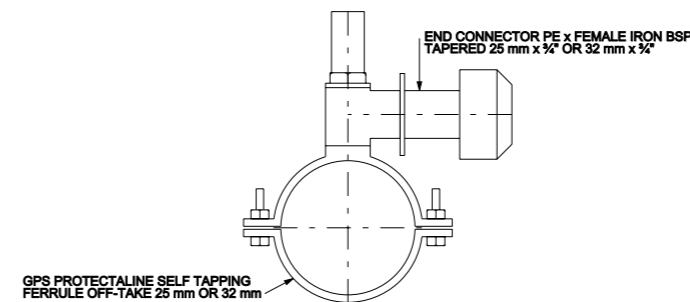
SCHEDULE OF PIPES AND FITTINGS		
MK	DESCRIPTION	NO OF
01	PE BUTT WELDED IN LINE TEE KIT	1
02	PE STUB FLANGE	4
03	SLUICE VALVE	2
04	HYDRANT	1
05	WRAPPING ALUMINIUM BARRIER TAPE AND PROPRIETARY WATERPROOF PETROLATUM TAPE (DENSO)	1

WHERE AN EXISTING BOUNDARY VALVE IS RETAINED ONLY ONE NEW VALVE IS REQUIRED AND PIPE FITTINGS SHALL BE MODIFIED TO SUIT

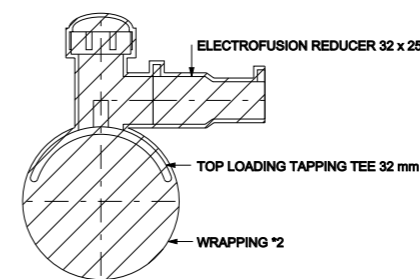


WATER DISTRIBUTION MAIN 25 mm / 32 mm CONNECTION AND METER BOX DETAILS FOR PE BARRIER PIPE SYSTEM 63mm FERRULE OFF-TAKE ALSO AVAILABLE

SCHEDULE OF PIPES AND FITTINGS		
MK	DESCRIPTION	NO OF
01	PROTECTALINE SELF TAPPING FERRULE OFF-TAKE 25 mm OR 32 mm	1
02	END CONNECTOR PE x FEMALE IRON BSP TAPERED 25 mm x 1/4" OR 32 mm x 1/4"	1
03	END CONNECTOR PE x MALE IRON BSP TAPERED 25 mm x 1/4" OR 32 mm x 1/4"	2
04	COMPRESSION ADAPTOR COMPATIBLE WITH THE PE BARRIER PIPE AND FROM APPROVED SUPPLIER (PHILMAC)	1



SELF TAPPING FERRULE OFF-TAKE* (PREFERRED METHOD)



TOP LOADING TAPPING TEE 32 mm (ACCEPTABLE ALTERNATIVE)

NOTE
1. MANUFACTURERS INSTRUCTIONS FOR REMOVING ALUMINIUM LAYER FROM PIPE SHALL BE FOLLOWED.
2. COMPLETE UNIT SHALL BE WRAPPED WITH ALUMINIUM BARRIER TAPE AND PROPRIETARY WATERPROOF PETROLATUM TAPE (DENSO).

DO NOT SCALE - IF IN DOUBT ASK

NOTES :

- 1.0 GENERAL
- 1.1 ALL DIMENSIONS ARE IN MILLIMETERS UNLESS OTHERWISE STATED.
- 1.2 FINAL ARRANGEMENT OF VALVES AND FITTINGS SHALL SUIT THE STREET ARRANGEMENT.
- 1.3 APPARATUS SHALL BE LOCATED SO THAT IT IS OPERATIONALLY ACCESSIBLE AT ALL TIMES.
- 2.0 PIPEWORK :
- 2.1 ALL FLANGED JOINT BOLT SETS SHALL CONFORM TO WIS4-52-03.
- 2.2 HYDRANTS AND VALVES SHALL BE INSTALLED SO THAT THEY ARE TRULY PLUMB.
- 2.3 ALL PE PIPEWORK SHALL BE WRAPPED WITH ALUMINIUM BARRIER AND PROPRIETARY WATERPROOF PETROLATUM TAPE

GUIDANCE NOTES:

- A. THIS DRAWING DETAILS BEST PRACTICE AND SHALL BE ADHERED TO WHERE EVER PRACTICABLE. DEROGATION OF THE CONTENT ON INTENT OF THIS DRAWING REQUIRES WRITTEN CONSENT FROM THE TECHNICAL LEAD.
- B. WHERE APPLICABLE ALL MATERIALS SHALL BE FROM THAMES WATER FRAMEWORK SUPPLIERS.
- C. EXTERNAL PROTECTION FOR BURIED FLANGED JOINTS, FLANGE ADAPTORs AND COUPLINGS SHALL BE TYPE P1 AS DEFINED IN CLAUSE 5.14 OF CESWI 7TH EDITION. THIS PROTECTION SHALL COVER THE FLANGE AND ALL NUTS, BOLTS AND THREADS.
- D. THE PIPE MATERIAL FOR USE IN CONTAMINATED LAND SHALL BE A THAMES WATER APPROVED BARRIER PIPE SYSTEM WHICH INCLUDES COMPATIBLE PIPE FITTINGS, JOINT PROTECTION AND METER BOXES. JOINT WRAPPING SHALL BE IN ACCORDANCE WITH THE PIPE MANUFACTURERS INSTRUCTIONS.

DATA OWNER	ASSET MANAGEMENT STANDARDS MANAGER
TECHNICAL LEAD (S)	MICHAEL BRIGHT
DOCUMENT AUTHOR	TECHNICAL INFORMATION
AUTHORISED BY	STANDARDS BOARD
DOCUMENT LOCATION	AM STANDARDS
DATE OF ISSUE	30/09/2015
REASON FOR ISSUE	UPDATED AND REISSUE
REVIEW DATE	30/09/2015



Thames Water Utilities
ASSET MANAGEMENT
CLEAR WATER COURT
WASTERN ROAD, READING RG1 8DB

Location Code:	OS Reference:	Security Reference:	Drawn By:
Project Group:		Sub Process:	
TECHNICAL STANDARDS			
Location / Town:			
Site Name:			
Project Name:			
STANDARD DRAWINGS - MANDATORY			
Contract Name:			
WATER NETWORK			
Drawing Title:			
DISTRIBUTION MAINS - PE BARRIER PIPE SYSTEM - STANDARD DETAILS			
Drawing No.:	Scale:	Sheet Size:	Rev:
AM-DRG-WN-02283	NTS	A1	1.0